



# Institute for Applied Ecology

*Dedicated to native ecosystem conservation, research, and education*  
4950 SW Hout Street, Corvallis OR 97333, phone: 541-753-3099

## Idaho Rare Plant Survey Technician - 2023

**POSITION DESCRIPTION:** Do you want to help conserve rare plants? Are you interested in searching for rare plants in the beautiful Idaho wilderness to support biodiversity conservation? The [Conservation Research Program](#) at the [Institute for Applied Ecology](#) will be hiring two seasonal technicians to work on projects conducting rare plant surveys throughout the state of Idaho. Field work will involve a variety of botanical survey methods. Technicians will work on a two-person crew with the crew leader and program staff to prepare field equipment, conduct field work, and assist in data management. Position will be based in Idaho, and field work will be conducted throughout the Shoshone and Cottonwood BLM Field Offices (see map on next page). Out-of-town/overnight travel (mostly if not all camping) is required, and field work will consist of 4-day hitches with weekends off. Duty-station will be discussed upon hire and contingent upon access to field sites but will be in SW or W Idaho. For the 2021 crew's perspective on the 2021 field season, please read the blog post [here](#).

**START DATE (TENTATIVE):** May 1 or May 8, 2023

**END DATE (TENTATIVE):** July 14 or July 21, 2023

### QUALIFICATIONS:

- B.S. in a relevant field (Botany, Plant Ecology, Plant Science, Environmental Science) or equivalent experience
- 1 or more seasons of field research experience, with preference given to those with skills in vegetation monitoring and inventory protocol and identifying plants of the Intermountain West
- Ability to identify plant species using technical keys, monographs, dissecting microscopes, etc
- Mature, self-motivated, highly organized, and very comfortable working in and camping with a 2-person field crew
- Must have a valid driver's license, be willing to travel, and be able to perform strenuous work in all weather conditions
- Essential job functions include ability to hike 10+ miles in rugged terrain carrying a 30-lb load and work in a bent-over/kneeling/sitting position for long periods of time
- Computer skills (MS Word and MS Excel) required; experience in GIS and electronic data collection applications (e.g., S1 mobile, Collector, FieldMaps, Survey 123) is preferred

**COMPENSATION:** \$20.50/hr , plus travel expenses associated with overnight field work (food and lodging). Housing is not provided. This is a full-time temporary position with paid holidays and sick leave.

**VACCINE REQUIREMENT:** IAE has a mandatory Covid-19 vaccination policy. All employees are required to submit proof of vaccination prior to employment. Applicants may request exceptions and reasonable accommodations for medical or religious reasons. Any offer of employment will be contingent on complying with this policy.

**TO APPLY:** You must complete the online [application form](#). Submit a letter of interest stating when you will be available to start work (**this is a MUST**), resume, transcripts (unofficial is fine) as a single PDF document emailed to [jobs@appliedeco.org](mailto:jobs@appliedeco.org) no later than **11:59 pm, Sunday, February 19th, 2023**. *In the email subject line, please write the specific position title (at the top of each announcement) for which you are applying. Applications will be considered upon receipt. Hire may occur prior to the closing date.*

You will be required to include the names and contact information for three references in your application form. AT LEAST ONE reference must be from a supervisor from a previous work experience.

INCOMPLETE APPLICATIONS WILL NOT BE ACCEPTED. Non-U.S. residents must also include a copy of their work visa. Applications will be considered upon receipt. If you are applying for more than one position at IAE, please send separate application emails for each position, and include the job title in the subject line. Please direct all inquiries to [jobs@appliedeco.org](mailto:jobs@appliedeco.org).

Studies have shown that Black, Indigenous and People of Color (BIPOC), women and other marginalized groups are less likely to apply for jobs unless they believe they meet every one of the qualifications as described in a job description. We are most interested in finding the best candidate for the job, and that candidate may be one who comes from a less traditional background. If you are interested in applying, we encourage you to think broadly about your background and qualifications for the role.

*IAE supports diversity and equity, and we encourage applications from all groups of people. We recognize that the strength of IAE is in our people, and we believe that every employee has the right to work in surroundings that are free from all forms of unlawful discrimination and harassment. IAE does not and will not discriminate in employment and personnel practices, and our commitment to equal employment opportunity applies to every aspect of the employment relationship.*

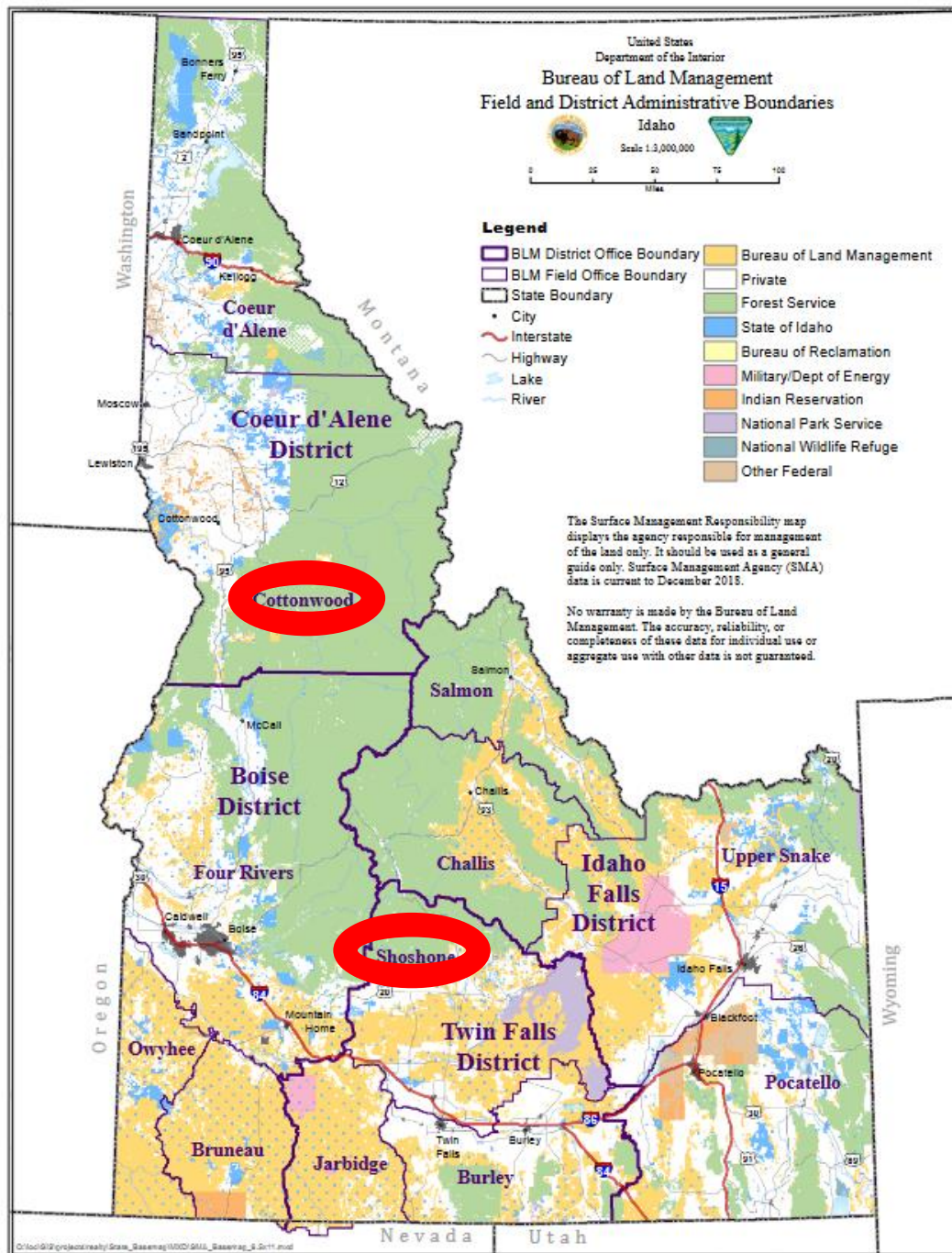


Figure 1. Map showing Bureau of Land Management Field and District Administrative Boundaries. One technician will work in the Cottonwood Field Office and one in the Shoshone Field Office, both of which have been circled in red.